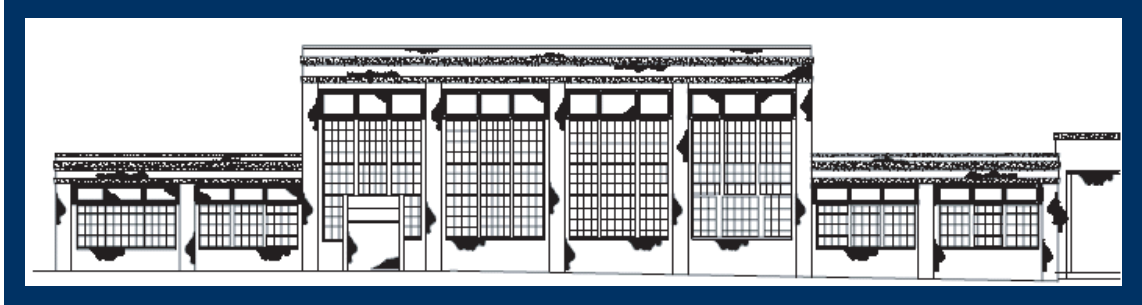


"Aggressively
Pursuing Your
Real Estate
Needs"



Milwaukee Industrial Trade Center

Building 37
2755 W. Hopkins Street
Milwaukee, Wisconsin



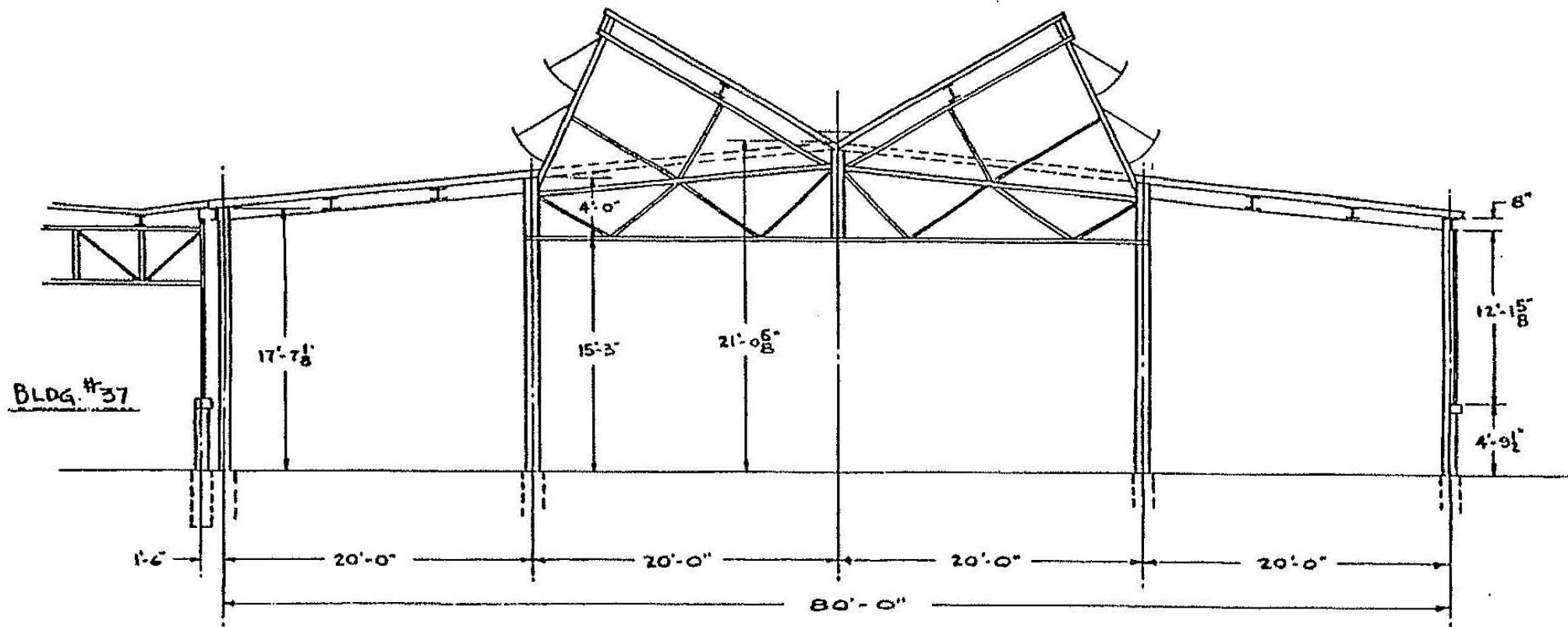
Industrial Building For Lease

- **BUILDING SIZE:** 125,800 Square Feet
- **DIMENSIONS:** 740 feet (East-West) x 170 feet (North-South)
- **YEAR BUILT:** 1920-58
- **ROOF:** St. - Tile Tectum St.
- **CRANES:** (4) 10-ton
(2) 20-ton
(40' wide x 19' high crane space)
- **LOADING:** (3) Overhead Doors
- **RAIL:** No
- **SPRINKLER:** No
- **POWER:** 2,000 amp/3-Phase/600 volt
- **LEASE RATE:** \$2.50 per square foot NNN
- **NNN EXPENSES:** \$0.50 per square foot
- **SPECIAL NOTES:** Additional information can be found at:
<http://www.mitcgroup.com/1.html> or
<http://www.dickmanrealestate.com>
- **LEASING AGENTS:** Brian S. Parrish
Samuel D. Dickman
Samuel M. Dickman Jr.

The Dickman Company, Inc.

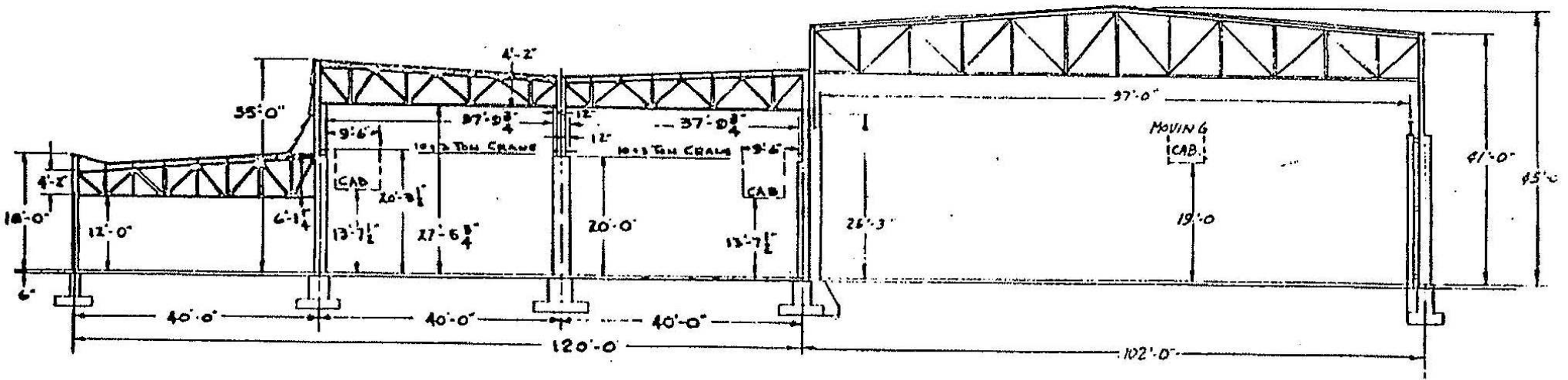
626 East Wisconsin Avenue . Suite 1020 . Milwaukee, WI 53202
414/271.6100 phone . 414/271-5125 fax . www.dickmanrealestate.com

Information contained herein was provided by Seller, Lessor and/or third parties. While it is believed to be reliable, Broker makes no warranty or representation as to the accuracy thereof.



BLDG. #37

CROSS SECTION BLDG. # 62



CROSS SECTION BLDG # 37

Milwaukee
Industrial
Trade
Center

414.873.2721
Fax: 414.873.2752

2725 W. Hopkins St., Milwaukee WI 53216
www.mitcgroup.com

