

FOR SALE OR LEASE

Number of Buildings: 5
Rentable Square Feet: 33,130 SF
Total Site Size: 7.37 Acres
Zoning: M-2
2017 Assessment: \$1,877,100
Features:

- 1.5 Miles to Stadium Interchange
- Tenant Income Available; Rent Roll Upon Request
- Trailer Parking
- Potential for Future Redevelopment

Asking Price: \$1,985,000
Lease Rate: Negotiable



TRUCK TERMINAL & INDUSTRIAL PORTFOLIO

W. BURNHAM STREET & W. ELECTRIC AVENUE
West Milwaukee, WI 53219

Zachary Noble

Principal
The Dickman Company, Inc.
C 262-510-6586 | O 414-555-5555
Zach@DickmanRealEstate.com

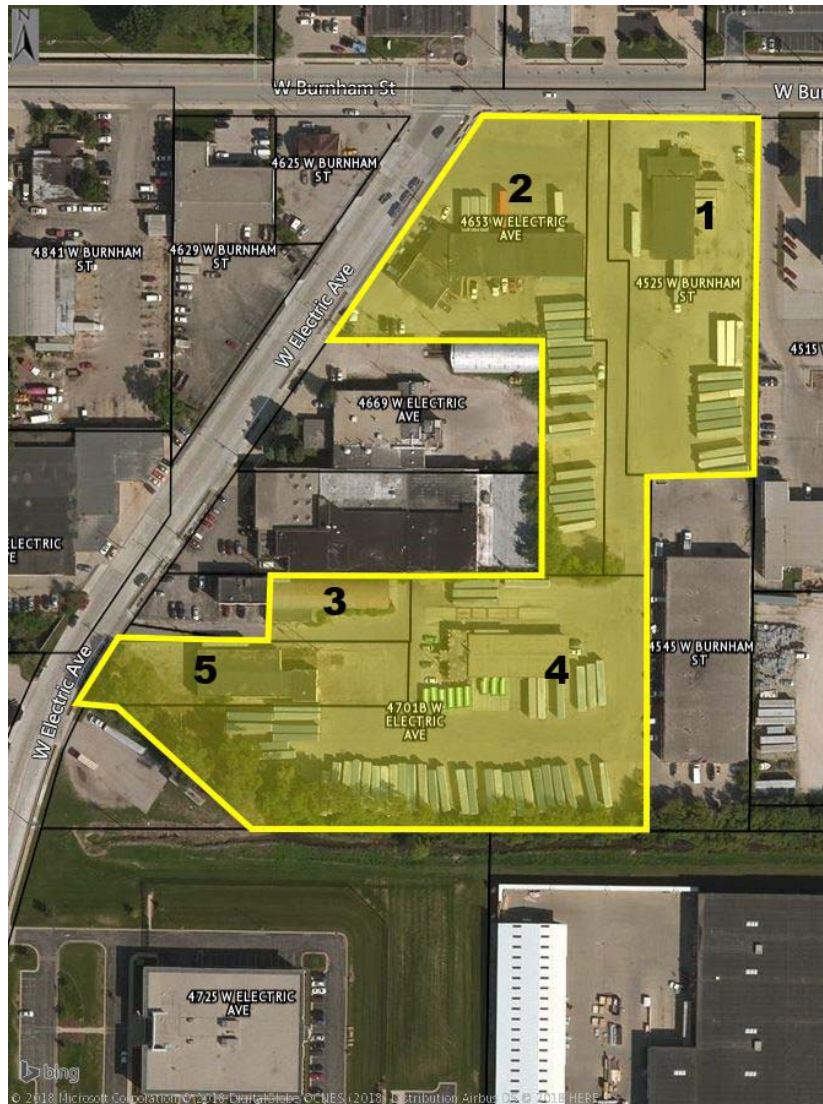
Zachary Hansen

Associate
The Dickman Company, Inc.
M 262-370-8470 | O 414-278-6882
ZHansen@DickmanRealEstate.com



SITE OVERVIEW

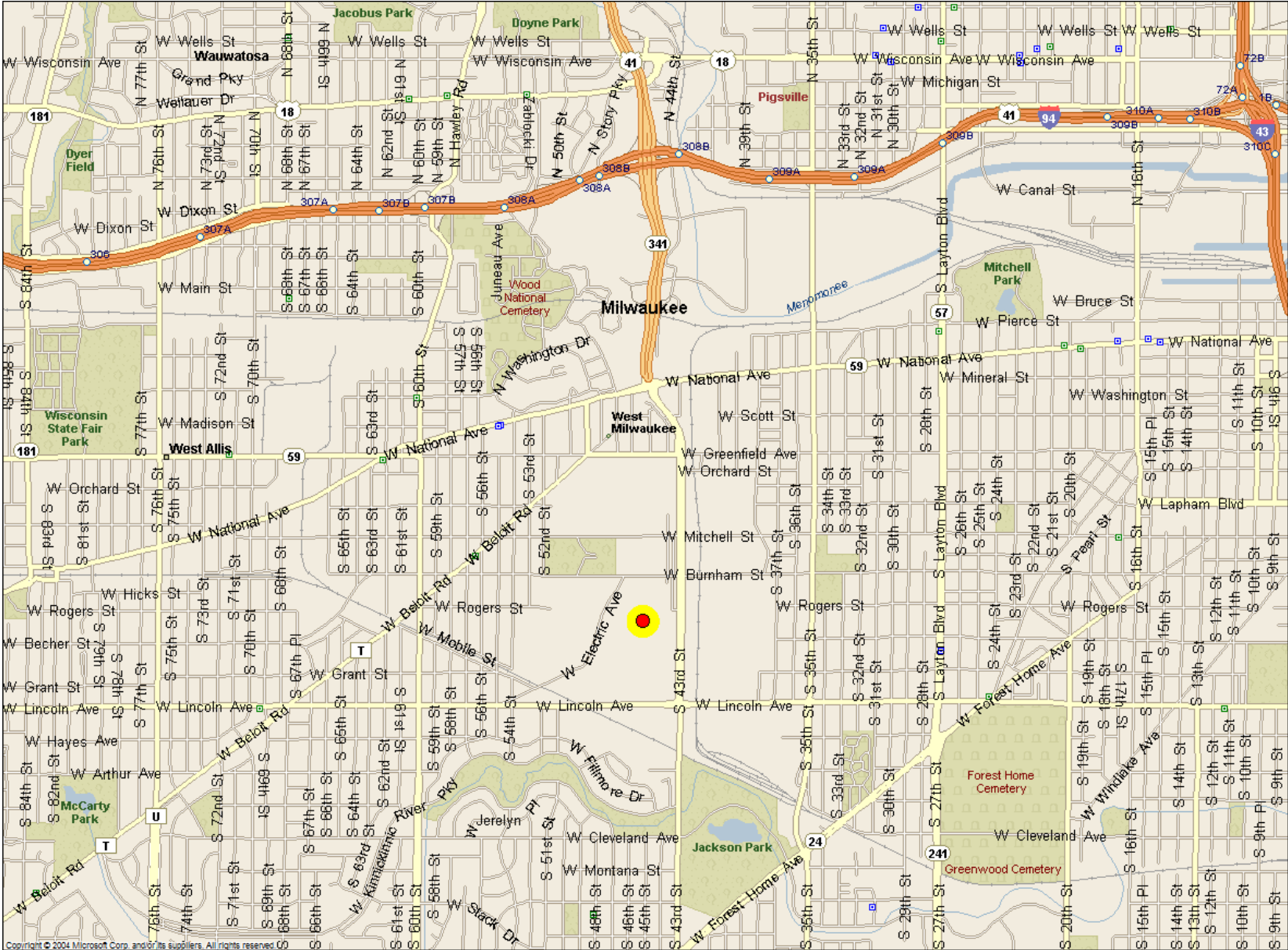
W. Burnham Street & W. Electric Avenue, West Milwaukee, WI 53219



	Address	Type	SF Acres	Docks Drive-Ins	Features
1	4525 W Burnham	Truck Terminal	5,088 SF 1.53 Acres	20 -	Cross Dock Facility; Trailer Parking
2	4653 W Electric	Truck Terminal	9,607 SF 1.73 Acres	13+ 5 (12' x 14')	Cross Dock Facility; Service Bays with Full Drive Through Capability; Trailer Parking
3	4701-A W Electric	Industrial	5,745 SF 0.28 Acre	- 1 (10' x 14')	Cold Storage
4	4701-B W Electric	Truck Terminal	5,890 SF 2.77 Acres	14+ -	Cross Dock Facility with Office Space; Truck Scale Installed; Trailer Parking
5	4711 W Electric	Industrial	6,800 SF 0.63 Acres	2 1 (10' x 10')	Masonry Construction; (2) Crane Rails w/ Bridge; Heavy Power; Floor Drain
			33,130 SF 6.946 Acres		

SITE OVERVIEW

W. Burnham Street & W. Electric Avenue, West Milwaukee, WI 53219





The Dickman Company, Inc.
626 East Wisconsin Avenue
Suite 1020
Milwaukee, WI 53202
Phone number: (414) 271-6100
Facsimile number: (414) 271-5125
Website: www.dickmanrealestate.com

